

PROJECT OVERVIEW

Objectives

To **inform** decision makers in Austria about **group-specific social vulnerabilities** to key climate risks as well as the within-country distributional effects of climate change impacts and adaptation on a national scale.

This will **enable the implementation of just and cost-effective adaptation** measures, including the strengthening of adaptive capacities where most needed.

Means

To reach the objective DISCC-AT follows **an inter- and transdisciplinary approach, combining qualitative and quantitative methods**, embedded in a broad stakeholder process.

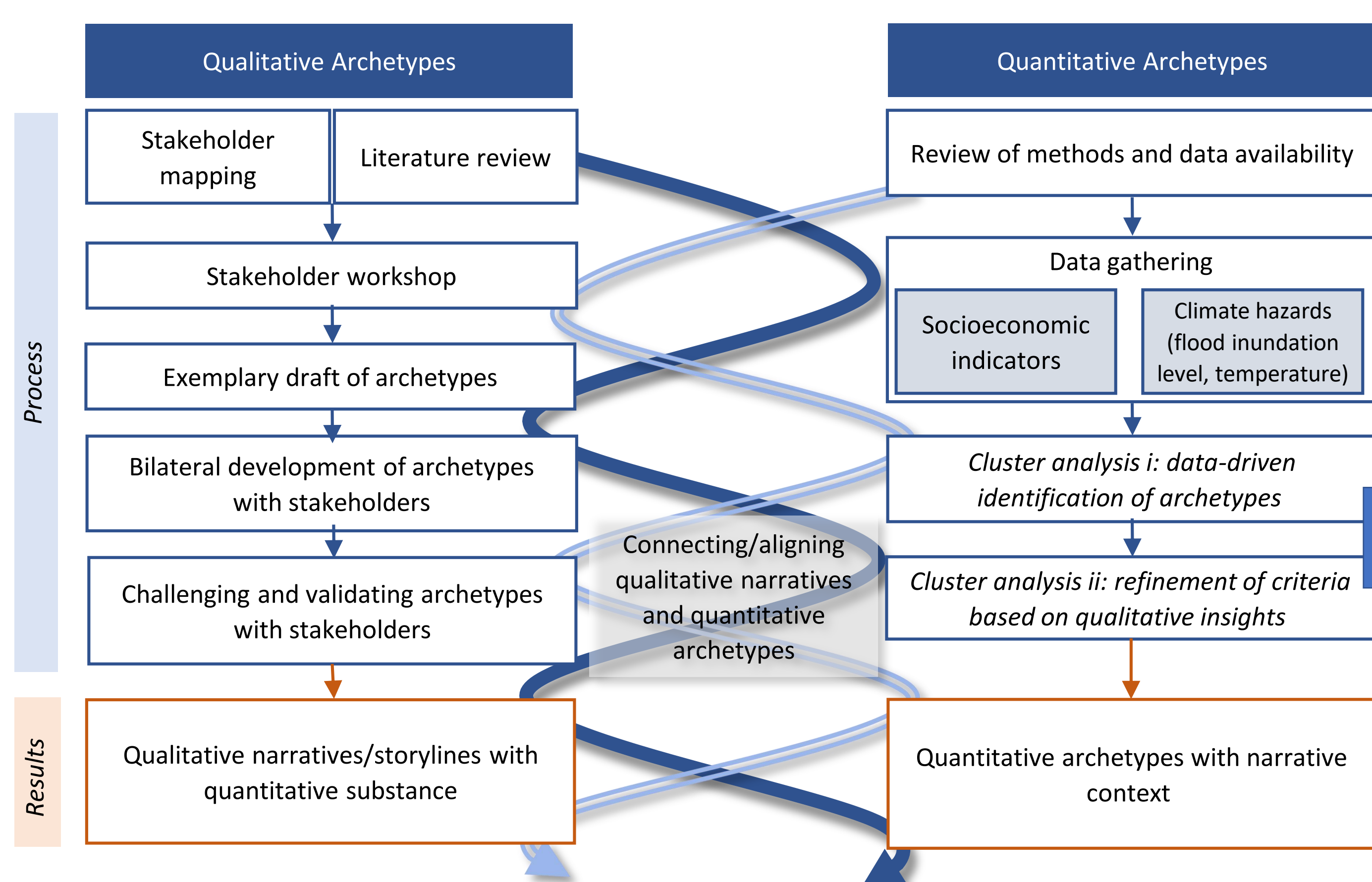
Focus

Flood and heat-related risks

METHODS

Mixed methods approach

- Stakeholder integration, interviews, workshops
- Literature review on the drivers of intersectional vulnerability
- Cluster analysis for identifying typical risk profiles ("Archetypes")
- Social flood risk modelling using the GLOFRIS model
- Health risk modelling using time series analysis
- Computable general equilibrium modelling for economy-wide assessment of distributional effects



Example: Heat
 → 90 clusters depicting different risk profiles
 → Filter those with highest risk (H x E x V) based on the combination of risk drivers
 → 23 clusters
 → What do they have in common? Differences?
 → What patterns do we detect?

Key research questions

#1

What are the **vulnerabilities** and therein particularly the adaptation capacities **for different societal groups** with respect to flood and heat related health risk?

#2

How can the **public sector increase adaptation capacities** where most needed?

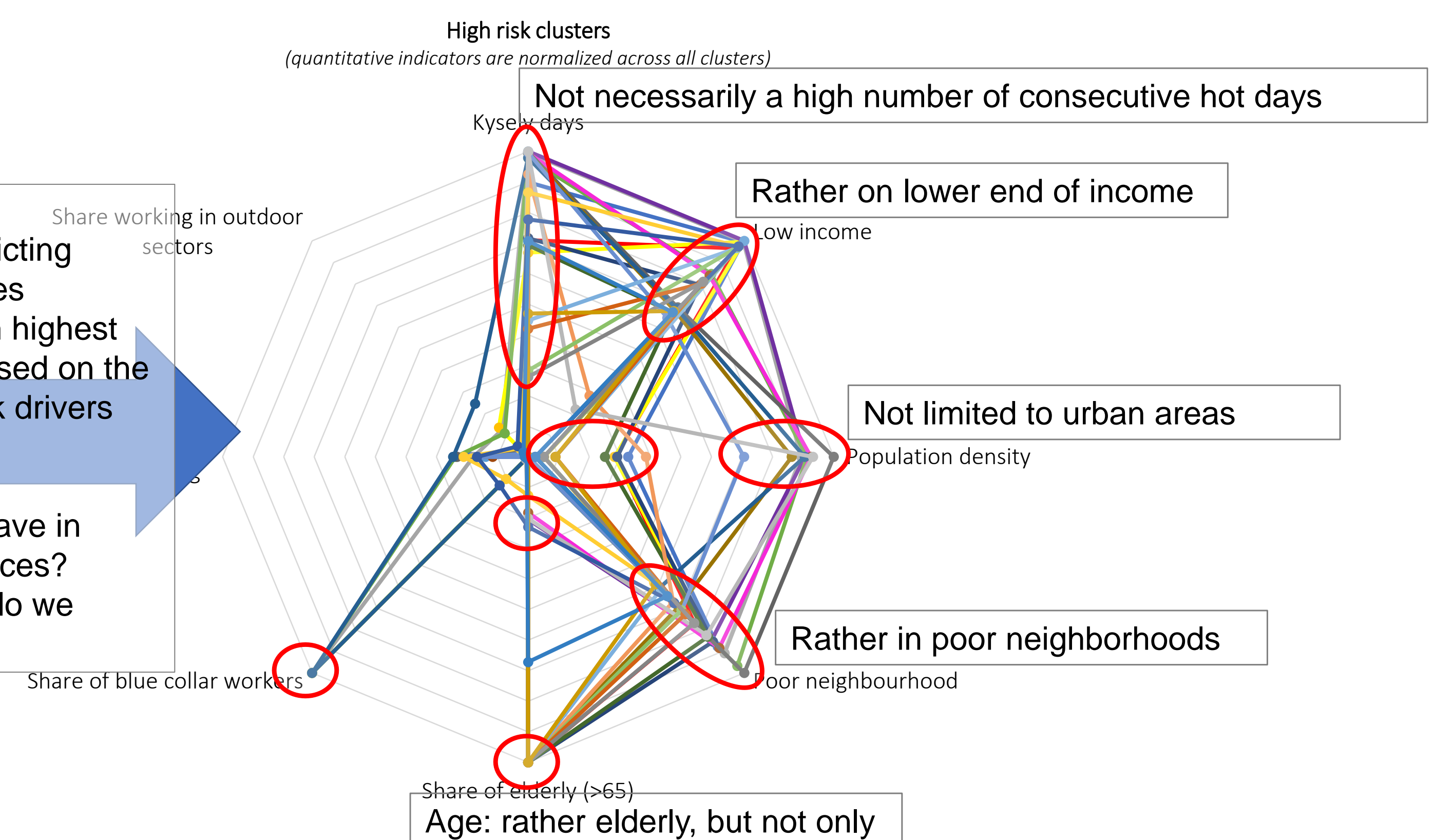
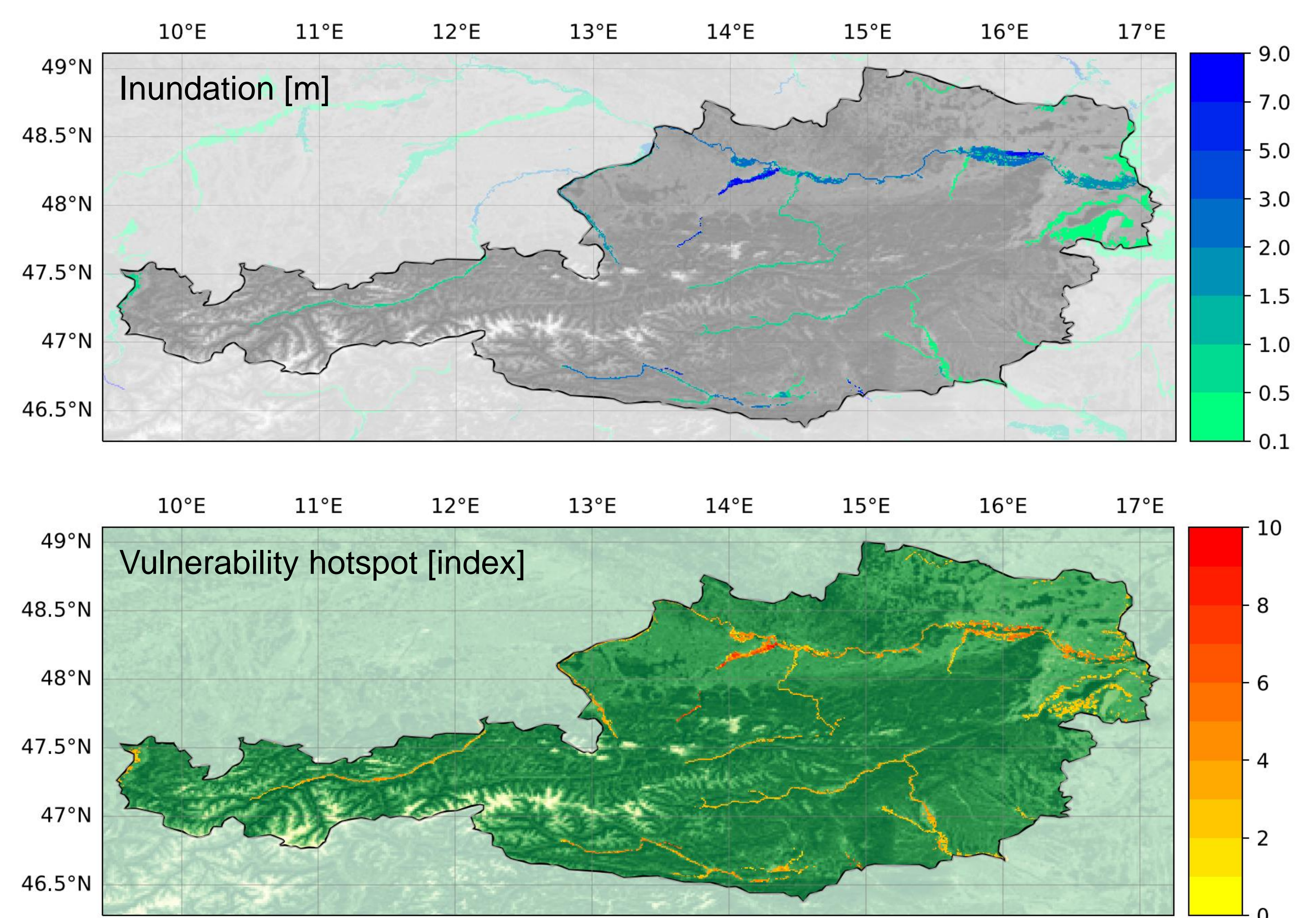
#3

Who bears the **welfare costs of climate change-induced flood and health impacts** in Austria and who benefits from public adaptation?

#4

What are ways forward for **mainstreaming just adaptation** in the existing transfer/social security/public insurance systems and in new policies?

SELECTED PRELIMINARY RESULTS



OUTLOOK

- 2nd stakeholder workshop in May 2024
- Heat-related labour productivity losses

- Macroeconomic modelling, based on archetypes
- Factsheets, policy briefs and journal publications

