



FACTORS FACILITATING GREEN GENTRIFICATION – A REVIEW OF SOCIAL SCIENTIFIC RESEARCH ANALYSING THE JUSTICE OF CLIMATE CHANGE ADAPTATION IN URBAN CENTRES

W|W|T|F

Wiener Wissenschafts-, Forschungs- und Technologiefonds

11 SUSTAINABLE CITIES
AND COMMUNITIES

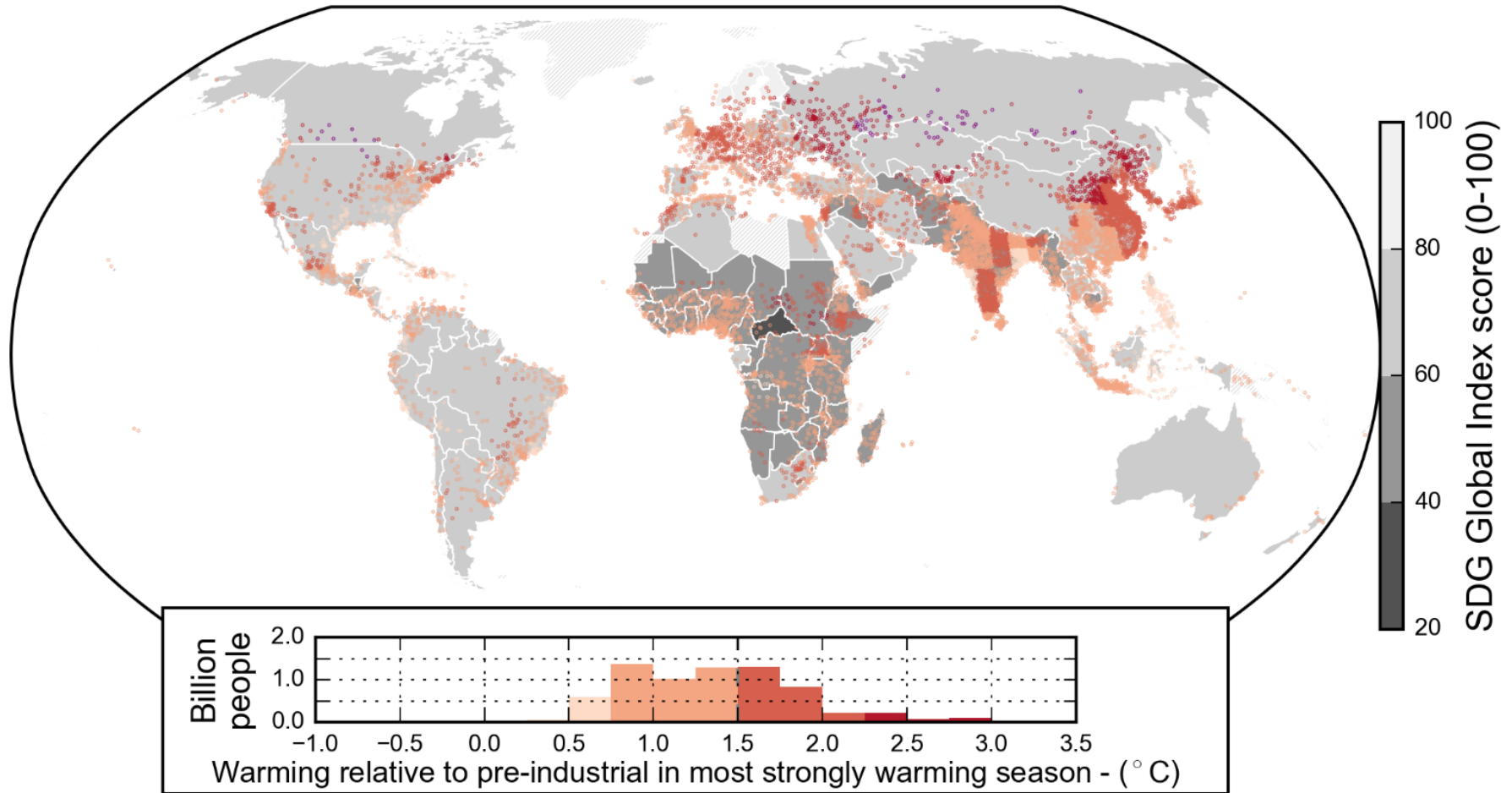


16 PEACE, JUSTICE
AND STRONG
INSTITUTIONS



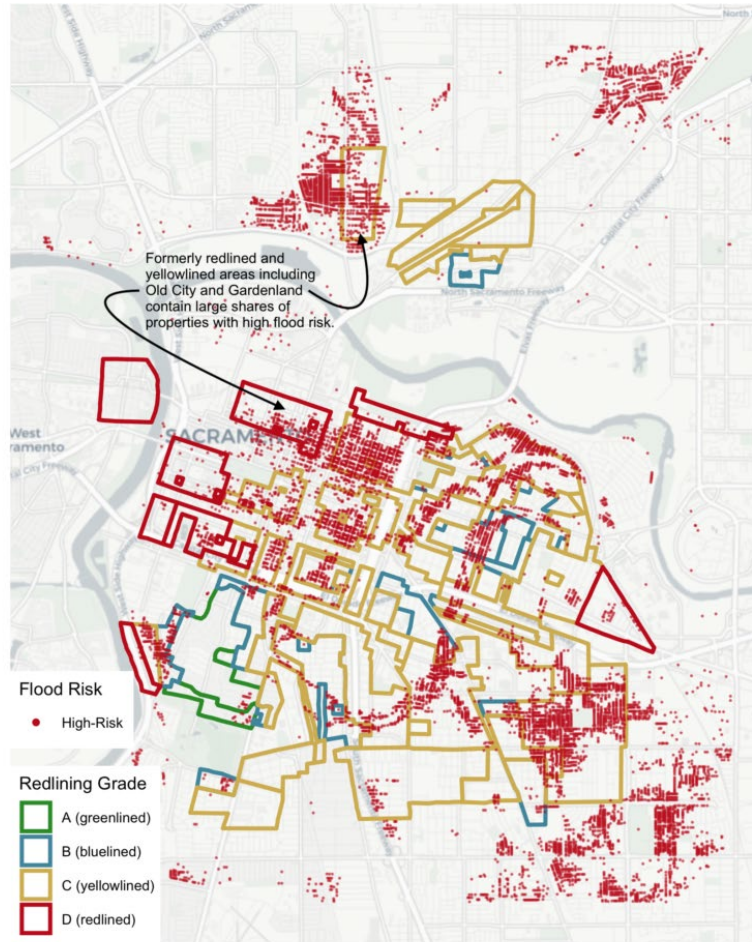
Thomas Thaler &
Christoph Clar

Global Change of Climate Change



Spatial inequality

Sacramento's Formerly Redlined and Yellowlined Neighborhoods Face High Flood Risk
Flood risk in Sacramento, CA



Source: Redfin analysis of First Street Foundation flood risk data and HOLC redlining maps.
Background map copyright OpenStreetMap contributors.

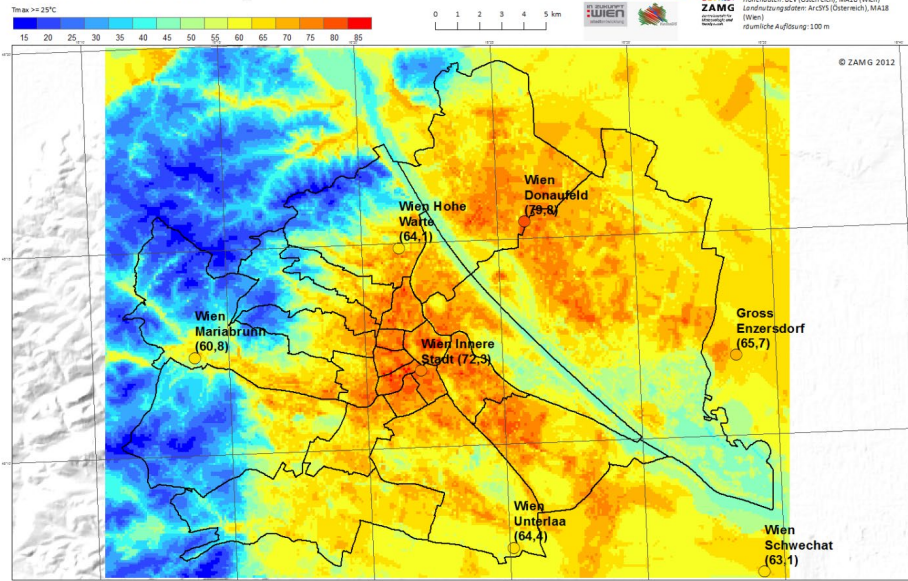
REDFIN

© Redfin (2021)

How is the situation in Vienna?

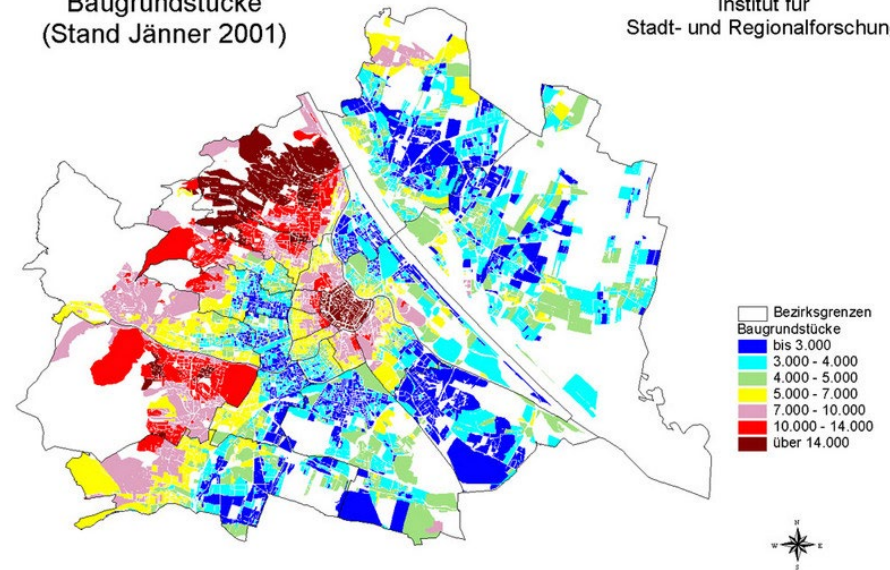
Sommertage: 1981-2010

MUKLIMO Szenario V120330_20120601

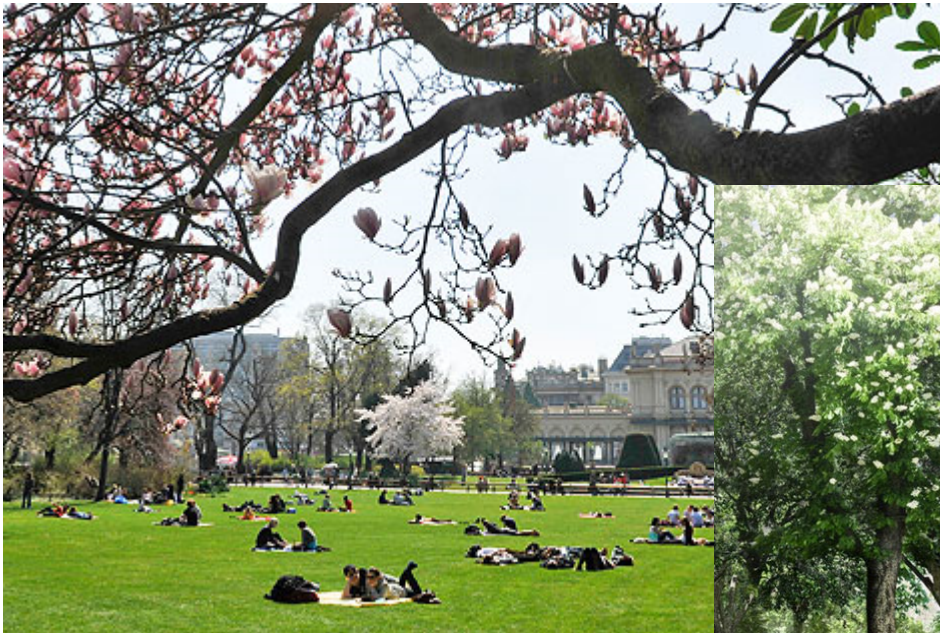


© Zuvela-Aloise et al. (2016)

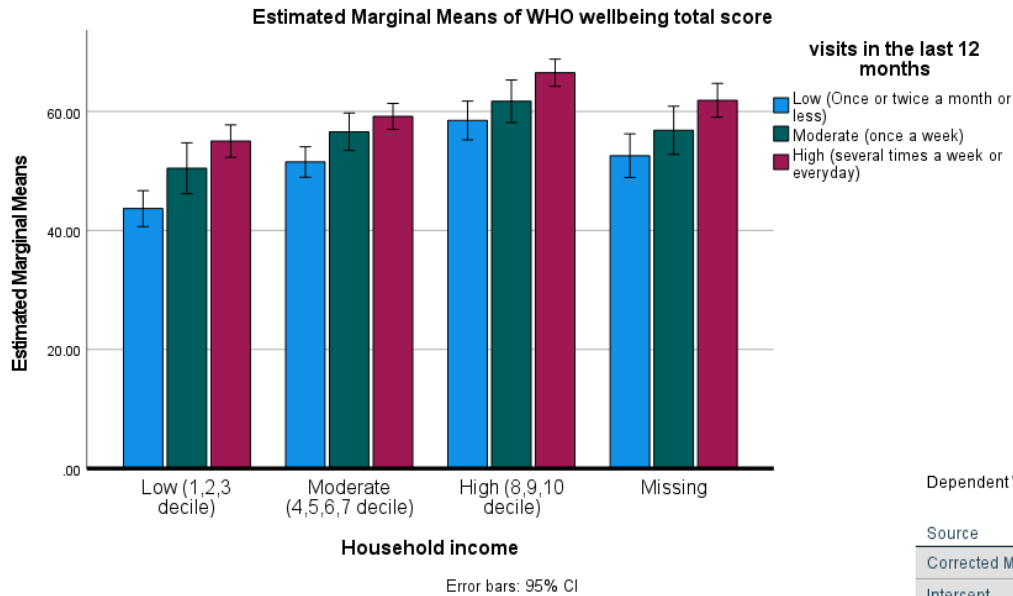
Preise für Baugrundstücke (Stand Jänner 2001)



Green spaces in Vienna



Access to green and blue spaces



Tests of Between-Subjects Effects

Dependent Variable: who5tot

Source	Type III Sum of Squares	df	Mean Square	F	Sig.	Partial Eta Squared
Corrected Model	93390.615 ^a	11	8490.056	17.965	.000	.073
Intercept	6735030.676	1	6735030.676	14250.992	.000	.851
household_income_collapsed	40884.975	3	13628.325	28.837	.000	.033
v_12m3c	36901.645	2	18450.822	39.041	.000	.030
household_income_collapsed * v_12m3c	1340.712	6	223.452	.473	.829	.001
Error	1182447.247	2502	472.601			
Total	9455456.000	2514				
Corrected Total	1275837.862	2513				

a. R Squared = .073 (Adjusted R Squared = .069)

Green Gentrification – Vienna at risk?



© Seebauer (2021)

Conclusion

- a. We can see that income and visits to nature predict higher well-being
- b. We can see that unemployed are those who are going low amounts to nature could gain significantly higher wellbeing by increasing the frequency of their visits to once a week
- c. Vienna is at risk of green gentrification
- d. There are some planning instruments, but question is how strong these are
- e. Policy documents doesn't include strategies against green gentrification