

Climate Knowledge & Innovation Community





Vision

Europas Führungsrolle im globalen Wandel hin zu einer nachhaltigen Gesellschaft stärken

Mission

Wir verbinden, inspirieren und befähigen die Partner-Gemeinschaft, um gemeinsam eine CO₂-neutrale und klimaresiliente Gesellschaft zu gestalten

How CKIC Works

- We are a **Knowledge & Innovation Community (KIC)** consisting of ca. 240 European organizations from the private, public, and academic sectors
- We employ approx. 150 staff to **manage this Community** through local presence in 13 locations across Europe
- We work with partners to pursue three main activities:
 - Initiation, development, management and funding of **innovation projects**
 - Acceleration of climate-relevant **start-ups**
 - **Education** of students, researchers, and professionals
- We **focus and structure** our activities along 4 thematic priority areas and along a rigorous and coherent innovation framework
- Each year, we receive funding from the **European Institute of Innovation & Technology (EIT)** to deliver on our mission (2017: €81m)
- In order to receive funding, organizations must apply and be approved as Core Partner or Affiliate Partner of Climate-KIC

Our Locations

Our six **geographies** are the hubs of our pan-European presence. This is where we **put innovation into practice** and build our partnership community.

UK & Ireland

London (HQ)

Birmingham

D-A-CH

Zurich

Berlin

Nordics

Copenhagen

CEE

Budapest

Wroclaw

Mediterranean

Paris

Bologna

Valencia

BENELUX

Utrecht

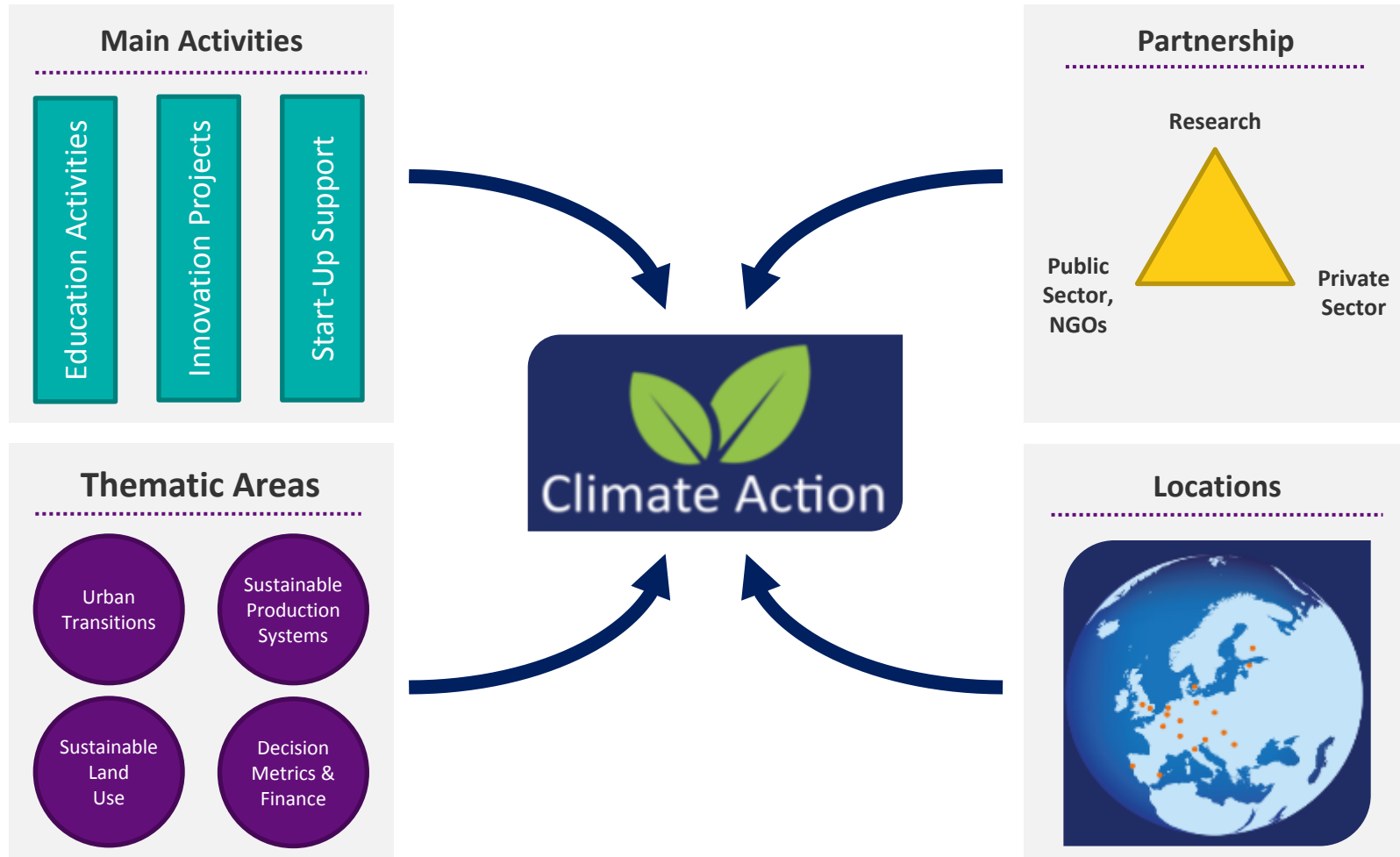
Brussels

Our Partner Community

The **Climate Knowledge & Innovation Community** consists of 240 partners working to deliver our programmes and shape our strategy, including:

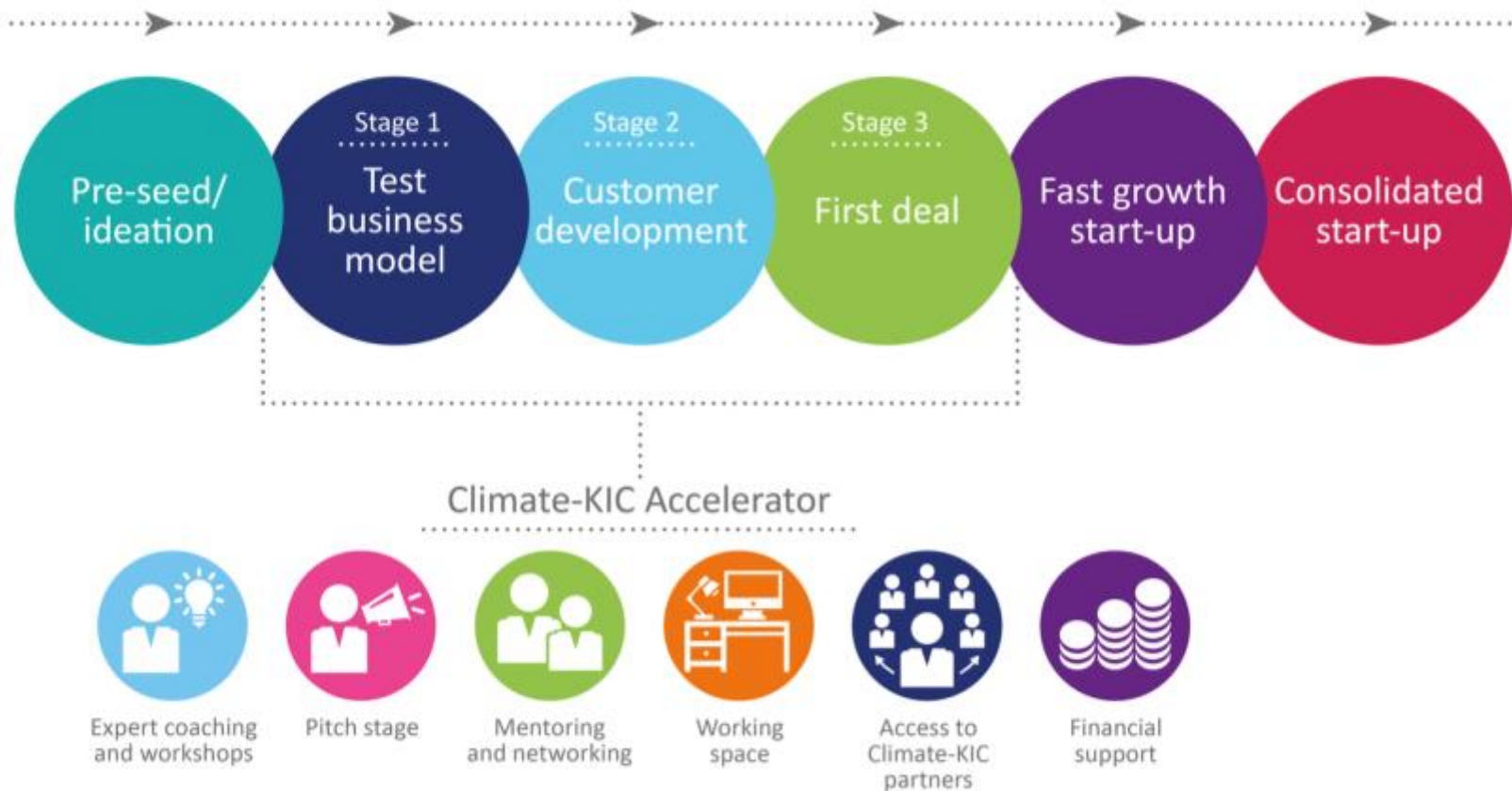


How We Deliver Impact



Our Start-Up Accelerator

A **three-stage program** providing financial resources and programmatic elements to make start-ups investment ready and/or market ready.





climate-kic.org

Thank you



Climate-KIC is supported by the
EIT, a body of the European Union