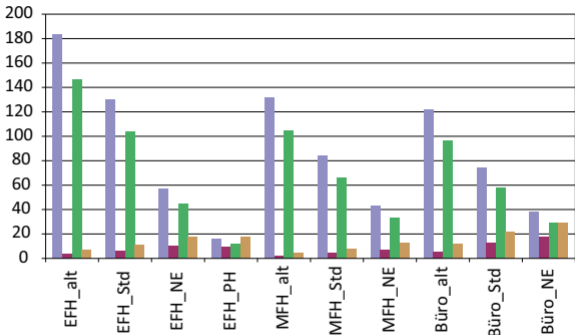


Nutz-Jahresenergiebedarf nach OIB (2008) in

kWh/m<sup>2</sup>a



■ Klima 1990 HWB [kWh/m<sup>2</sup>a]

■ Klima 2050 HWB [kWh/m<sup>2</sup>a]

■ Klima 1990 KB [kWh/m<sup>2</sup>a]

■ Klima 2050 KB [kWh/m<sup>2</sup>a]