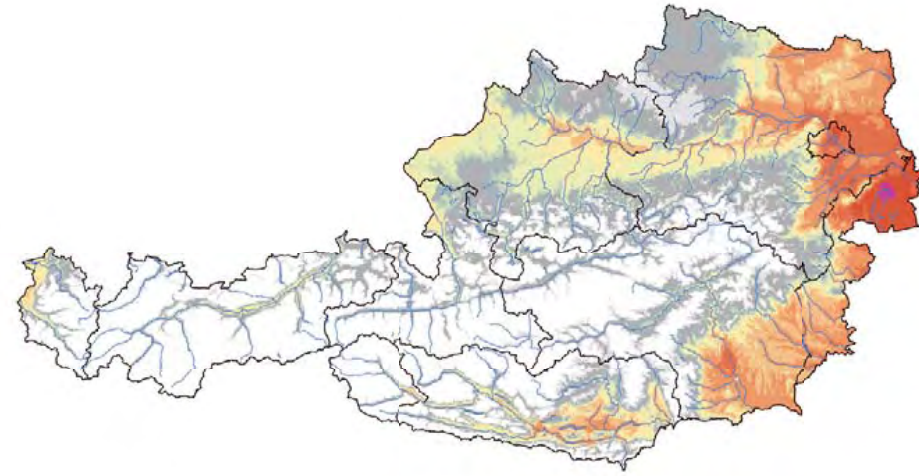
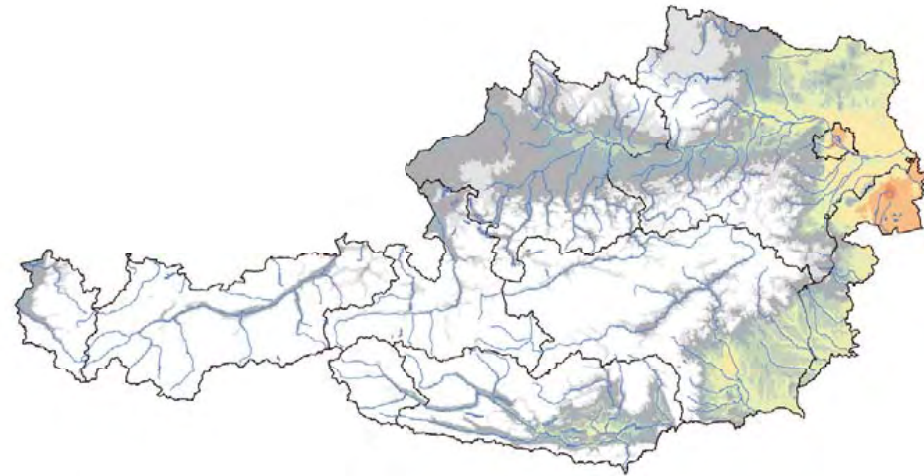
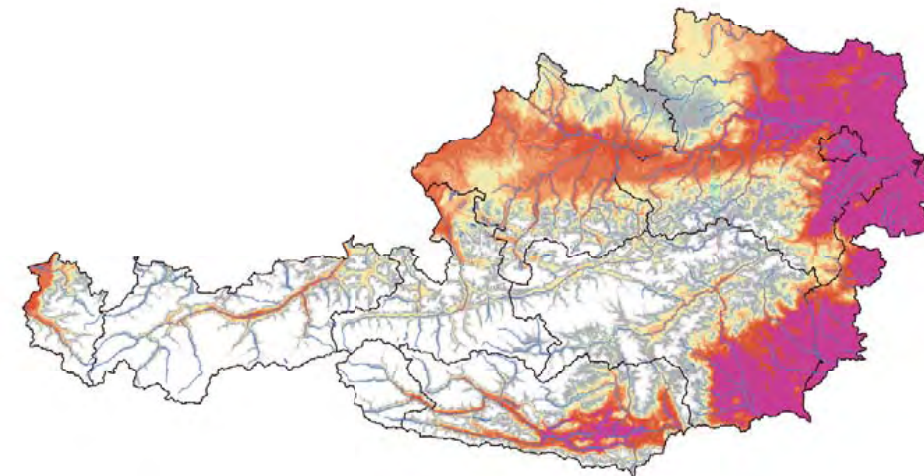


1981-2010




2036-2065



2071-2100



Huglin Index

- | | | | |
|---|------------------------------------|---|------------------------------|
|  | kein Weinbau möglich |  | Grüner Veltliner, Pinot Noir |
|  | in äußersten Gunstlagen möglich |  | Cabernet Franc |
|  | in Gunstlagen möglich |  | Merlot, Welschriesling |
|  | Müller Thurgau, Blauer Portugieser |  | Ugni Blanc (Frascati) |
|  | Pinot Blanc, Gewürztraminer |  | Syrah |
| | |  | Carignan |
| | |  | Aramon |